

# choosi

## Cart 2 Cart with Milk Compartment

For info or to place and order, contact:

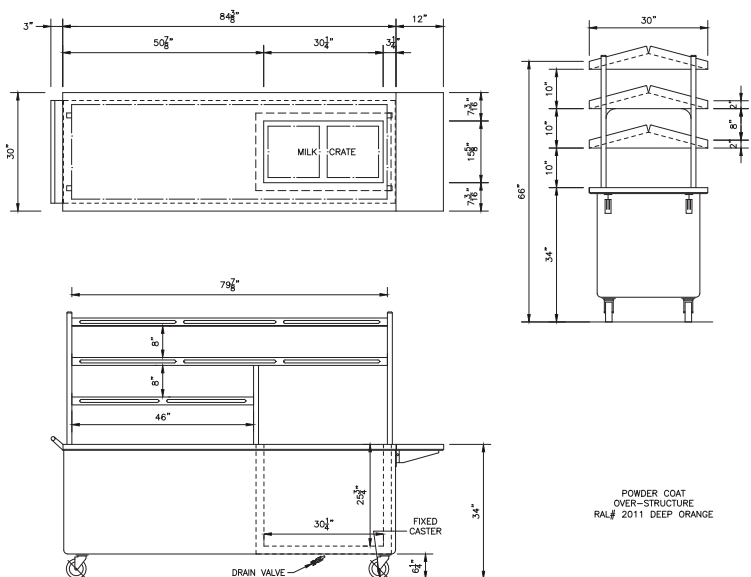
Kristin Mason kmason@pascoinc.net

Pasco Brokerage 972.596.3350



### Features

- Milk compartment with 7 eutectic cold packs to keep 4 13" x 13" crates of milk cold
- Powder coated 14 gauge stainless steel sloped shelves hold approx. 250 sack meals
- Approx. 84-3/8" x 30" x 34" high
- Molded fiberglass body in choice of white or green (as shown)
- Vinyl wrap with Choosi branding & optional school logo
- Table top is durable 14 gauge stainless steel
- Flip up end shelf for point of sale tablet
- Stainless push handle for easy movement
- Four 5" diameter locking casters



### Order Details

Qty, White: \_\_\_ @ \$6,886 + School Logo \_\_\_ @ \$150 = \_\_\_\_\_

Qty, Green: \_\_\_ @ \$6,886 + School Logo \_\_\_ @ \$150 = \_\_\_\_\_

(+ FREIGHT CHARGES: Call or email Pasco for freight rates)

I have reviewed and approve these order details (please sign here)

Above pricing is in effect through December 17, 2017. Any sell sheets that preceded this are null and void. We reserve the right to change specifications and product design without notice. Such revisions do not entitle the buyer to corresponding changes, improvements, additions or replacement for previously purchased equipment.

KidsChoose, Inc.  
PO Box 2410  
Santa Monica, CA 90407



LTI, Inc.  
9192 Tara Boulevard  
Jonesboro, GA 30236