



Cart 7

Grab-a-Bag Cart

FOR INFO OR TO PLACE AN ORDER, CONTACT:

Emily Hart ehart@pascoinc.net
 Pasco Brokerage 800.788.8216

FEATURES

- 84-3/8" long x 30" wide x 34" high
- Molded fiberglass
- Insulated well 3-pan capacity to accommodate hot/cold items
- Double-sided service, 2-tier sloped overshelf (14-gauge stainless steel)
- Stainless steel push handle
- 5" casters with brakes on all wheels
- Freezer packs

CART BODY COLOR OPTIONS (CHECK ONE)

- Red White Blue (as shown) Black

DOUBLE-SIDED CART 7

If ordering a height other than the standard 34", what height? _____

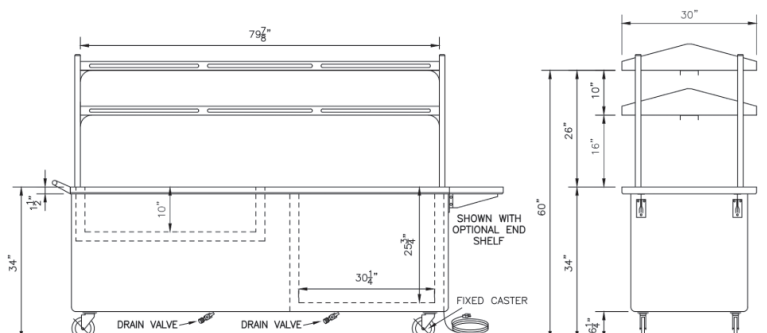
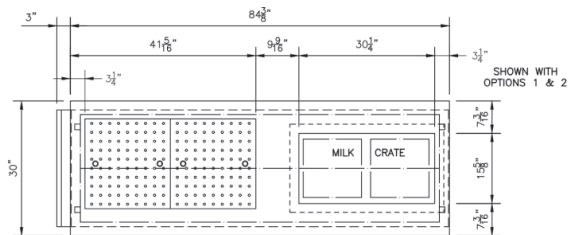
Qty: _____ @ \$8,441 = _____ (Red)

Qty: _____ @ \$8,441 = _____ (White)

Qty: _____ @ \$8,441 = _____ (Blue)

Qty: _____ @ \$8,441 = _____ (Black)

(+ FREIGHT CHARGES: Call or email Pasco for freight rates)



I have reviewed and approve these order details (please sign here)

We reserve the right to change pricing, specifications and product design without notice. Such revisions do not entitle the buyer to corresponding changes, improvements, additions or replacement for previously purchased equipment.



THE NFL MOVEMENT FOR AN ACTIVE GENERATION

©2014 National Dairy Council. Fuel Up is a service mark of National Dairy Council.



LTI, Inc. 1947 Bill Casey Pkwy.
 lowtempind.com Jonesboro, GA 30236